



SMM 1710BHP SERIES ~

SMT Common Mode Chokes



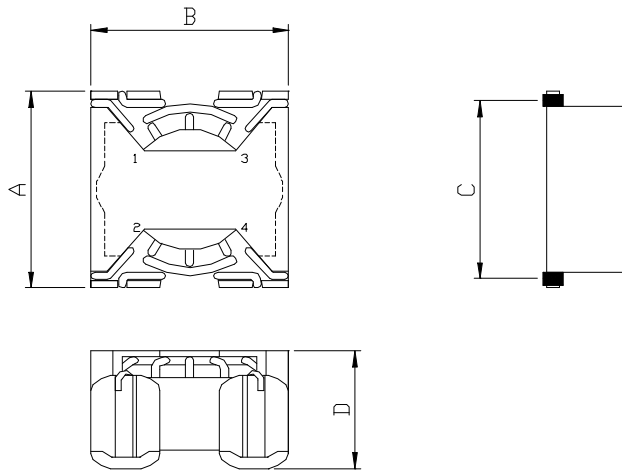
RoHS Compliant

PART NUMBERING SYSTEM

<u>SMM</u>	<u>1710BHP</u>	—	<u>4 7 1</u>	—	<u>LF</u>
TYPE	DIMENSIONS		IMPEDANCE		LEAD FREE

SHAPES AND DIMENSIONS

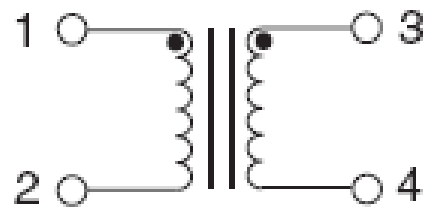
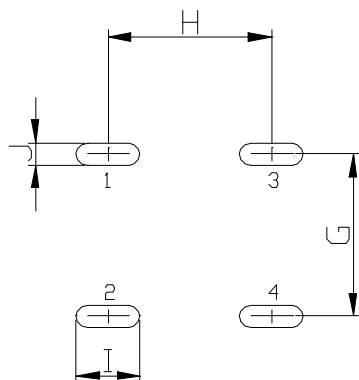
UNIT : mm



A= 19.5 Max. B= 17.0 Max. C= 16.51 Max. D= 10.0 Max.

PCB LAYOUT

SCHEMATIC DRAWING



G= 16.76 H= 11.3 I= 4.45 J= 1.52 Ref.



SMM 1710BHP SERIES ~

SMT Common Mode Chokes



RoHS Compliant

FEATURES

- **Exceptionally low DC resistance** thanks to the use of heavier gauge wire
- Solutions based on impedance , size and current
- Designed for DC-DC Converters
- Wide Variety of inductor sizes and current ratings available
- Dielectric strength : **1000Vrms** .
- **RoHS-compliant**. 260°C compatible. Tin-silver over copper terminations

SPECIFICATION TABLE

PART NUMBER	INDUCTANCE (mH)	I _{rated} (A)	DCR (mΩ) (Max.)	Test Freq.
SMM1710BHP-471-LF	0.47±35%	14.0	8	10KHz / 1V
SMM1710BHP-631-LF	0.63±35%	11.6	10	10KHz / 1V
SMM1710BHP-811-LF	0.81±35%	9.7	14	10KHz / 1V
SMM1710BHP-531-LF	0.53±35%	7.2	15	10KHz / 1V
SMM1710BHP-771-LF	0.768±35%	4.7	40	10KHz / 1V
SMM1710BHP-221-LF	0.22±35%	3.3	60	10KHz / 1V
SMM1710BHP-132-LF	1.32±35%	3.3	60	10KHz / 1V
SMM1710BHP-142-LF	1.47±35%	2.8	80	10KHz / 1V
SMM1710BHP-881-LF	0.88±35%	1.63	110	10KHz / 1V
SMM1710BHP-112-LF	1.17±35%	1.22	200	10KHz / 1V

- Inductance is measured with a LCR meter 4284A or equivalent.
- Operating temperature range -40°C to +85°C.
- Electrical specifications at 25°C .
- Packing : 13" reel, machine-ready ,embossed plastic tape (180 parts per full reel).
- Operating Temperature Range : -40°C ~ +130°C.
- Storage Temperature Range : -55°C ~ +130°C.